

# 3 THE BIG THREE

*SHOW 2019-20*



# WHO?

At the start of the 1960's Liverpool's Mersey beat was the epicentre of the music world, producing some of the biggest hits and bands of the time and showcasing the best live music you could find. With numerous chart topping hits and now infamous underground 'Beat Music' venues, the 1960's was the start of one of Liverpool's biggest bands. Named 'the bands band' and owning the Mersey side music scene, with sell out shows and hundreds of fans, it can be none other than..... The Big Three. Wait, what?!



Before The Beatles became the biggest Liverpool export to date, the R & B, Roll N' Roll Three piece 'The Big Three' headlined the Merseyside sound and were the biggest band of the day. With little known about the band and with a rich back story as to reasons why 'The Big Three' never made it, this show present the band that should have been, but never were and how they influenced the Fab Four.

From their glory days of top billing the infamous Cavern Club and supporting some of Rock N' Roll's royalty to the final days of the band. We take you through the successes and failures married with the best live music played along the way. With music from Chuck Berry, Ray Charles, Elvis, Sam Cooke, Little Richard, Buddy Holly and many more, the story of The Big Three is one that isn't well known but should never be forgotten. A true story set in the world of The Beatles, Hamburg, Brian Epstein and the true birth of British Rock N' Roll.



## WHY?



In 2017 Bills Kenwright's hit West End show 'Cilla The Musical' started a tour of the U.K. with hundreds of raving reviews and sell out shows. The band 'The Big Three' (who also doubled as the shows core band) were originated by actor

musicians Tom Dunlea (Hutch - Drummer & Singer), Jay Osborne (Griff - Guitarist & Singer) and Chris Weeks (Gus - Bassist & Singer).



Throughout the tour the three musicians spent a lot of time researching and 'living the life' as a Big Three band member. In early 2018 a documentary about The Big Three (Some Other Guys) was released and the boys met the original members of The Big Three and continue to be close friends with them ever since.



The boys have taken it on to recreate the feel, style and live performance of The Big Three beyond Cilla The Musical, recording a live album, performing at



The International Beatles Week and headlining Liverpool's famous Cavern Club. From the way they dress to the instruments they play, Tom, Jay and Chris reproduce the real sounds and performance of the Merseybeat glory days and aim to bring The Big Three back to life to carry on the legacy of Liverpool's biggest 1960's band.



# THE BIG THREE



**Tom Dunlea**  
*Hutch*



Tom Dunlea graduated from Rose Bruford with a BA Hon's degree in Actor Musicianship.

Music has always been a fundamental part of his life, studying a wide range of different instruments, predominantly percussion at Centre for Young Musicians, National Youth Theatre and The Brit School.

Tom has played drums for 15 years and has performed in a variety of bands and shows, he has also gained experience as musical director with Home Theatre.

In his professional career Tom has played many iconic drummers on screen and stage including; Mitch Mitchell in "All is by my side", Ringo Starr in ITV's "Cilla" and Johnny Hutch in the UK tour of Cilla the musical.

Tom hopes to continue to combine his passions of music and acting in his professional life.

Jay has played guitar from the age of 7 and toured internationally with bands from the young ages of 15. Artists include; The Hives, Blink 182, The Artful Dodger, Goldie Lookin' Chain and Bob Dylan.

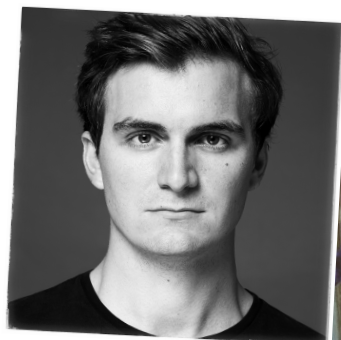
Jay completed a Music Degree from the University Of Chichester in 2010.

He toured as lead guitarist in the West End Shows 'Dreamboats & Petticoats' in 2017 and originated the role of Griff (Lead Show Guitarist) in the hit show 'Cilla The Musical' throughout 2017-18.

Other music, theatre and TV credits include; BBC, Disney Cruises, Celebrity Cruises, Royal Caribbean Cruises, ITV, BT Sport, O2, and Sky 1 to name a few.



**Jay Osborne**  
*Griff*



**Chris Weeks**  
*Gus*



Chris has been working as a singer and musician since he was 16. In that time he has been fortunate enough to have performed at some of the finest theatres, hotels and clubs in the UK and throughout Europe, as well as on cruises. He also works extensively as a session musician, arranger and musical director.

Having discovered the legend of The Big Three and becoming great friends with the original members, Chris takes huge pride in helping two of his best mates keep the fire of rock N' roll and the memory of the band (particularly the renowned bassist Johnny Gustafson) alive.



# IMAGES

(PLEASE CONTACT FOR FULL SIZE IMAGES)





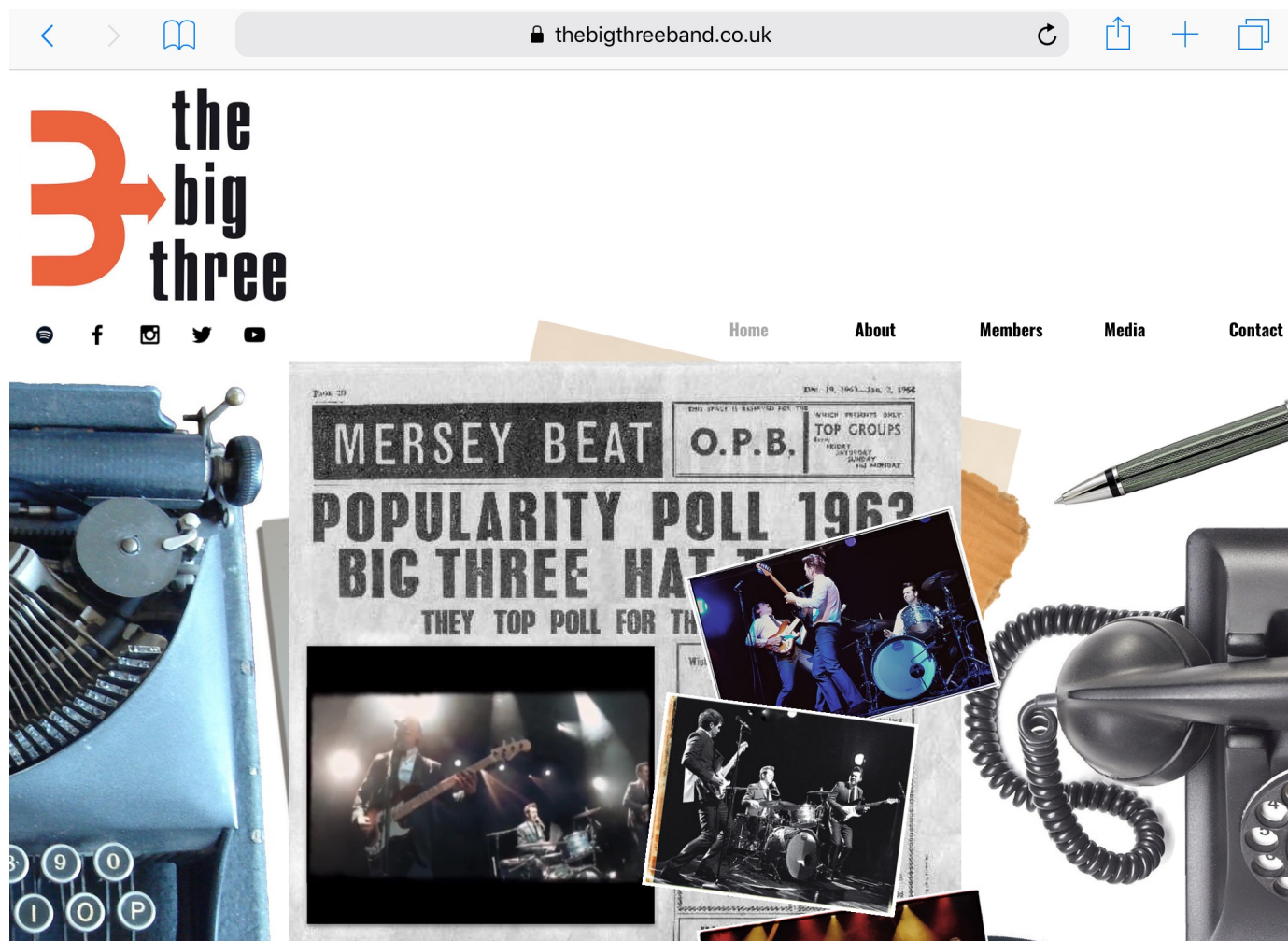








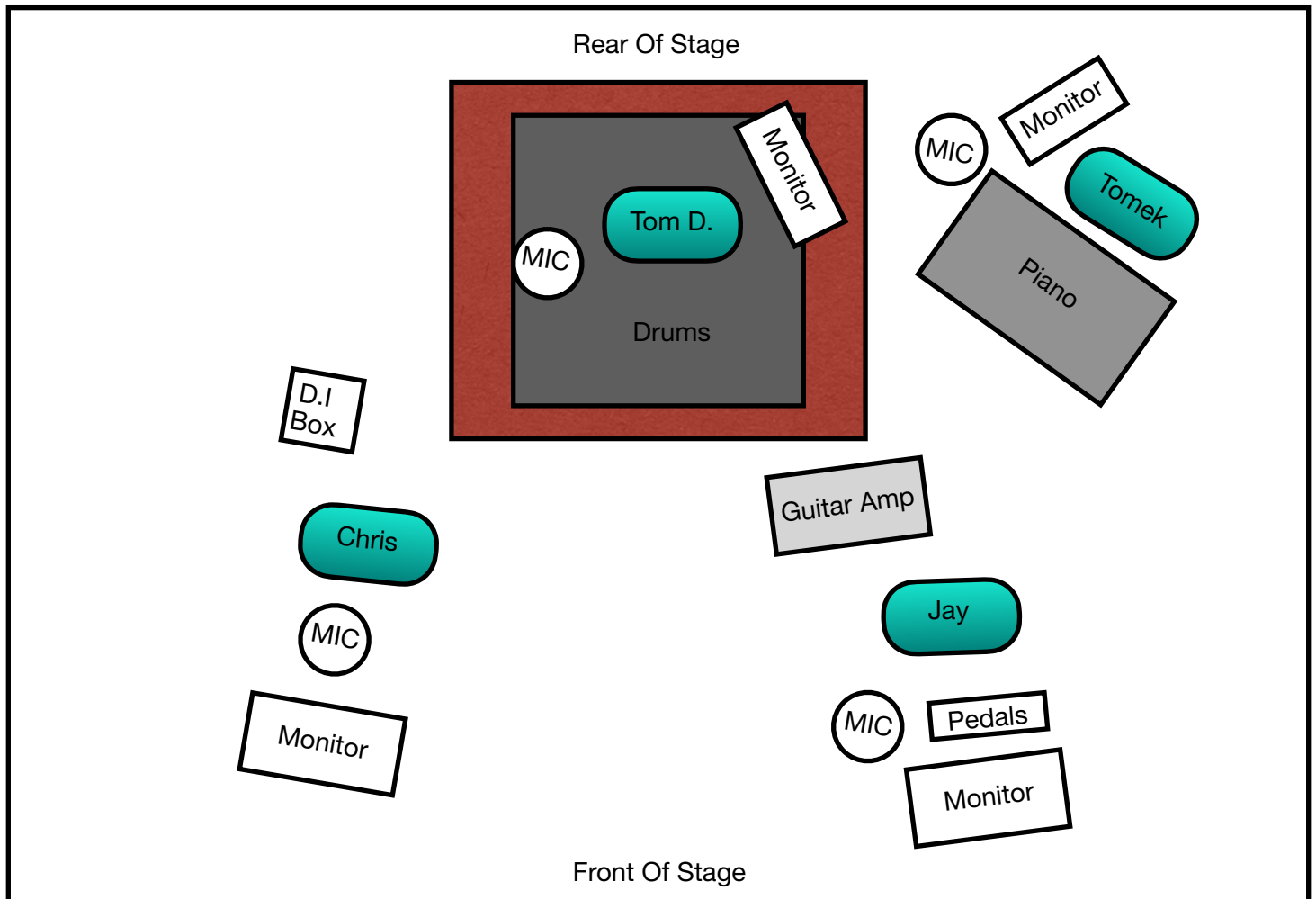
# ONLINE



**CHECK OUT THE BIG THREE WEBSITE FOR FULL  
BIO, IMAGES, LIVE VIDEO FOOTAGE AND MUCH  
MORE.**

[www.thebigthreeband.co.uk](http://www.thebigthreeband.co.uk)

# STAGE PLOT



## EQUIPMENT: (\*to be supplied by cruise ship/theatre)

- \*Drum Kit (*Bass Drum, Kit Pedal, Snare & Stand, Low Tom, Floor Tom, 2x Cymbal Stands, Hi-hat Stand, Drum Stool, Drum Mat*)
- Drum Breakables (*Crash, Ride and Hi-hat Cymbals, Stick etc.*)
- \*Full Drum Kit Microphone Set-Up
- \*Upright or Grand Piano (*Microphone Set-Up*)
- Vox AC30 Guitar Amp (*\*Power Plug Needed and Mic'd*)
- Guitar Pedals (*\*Power Plug Needed*)
- Fender Stratocaster Electric Guitar
- Gretsch G5420T Electric Guitar
- \*Direct Input Box (*For Bass Guitar*)
- Fender Precision Electric Bass Guitar
- \*4 Onstage Vocal Microphones
- \*4 Boom Microphone Stands
- \*3 Onstage Monitor Wedges (*Guitar, Bass, Piano*)
- \*1 Onstage Drummer Monitor Wedge
- \*Rise Platform (*Drum Kit*)